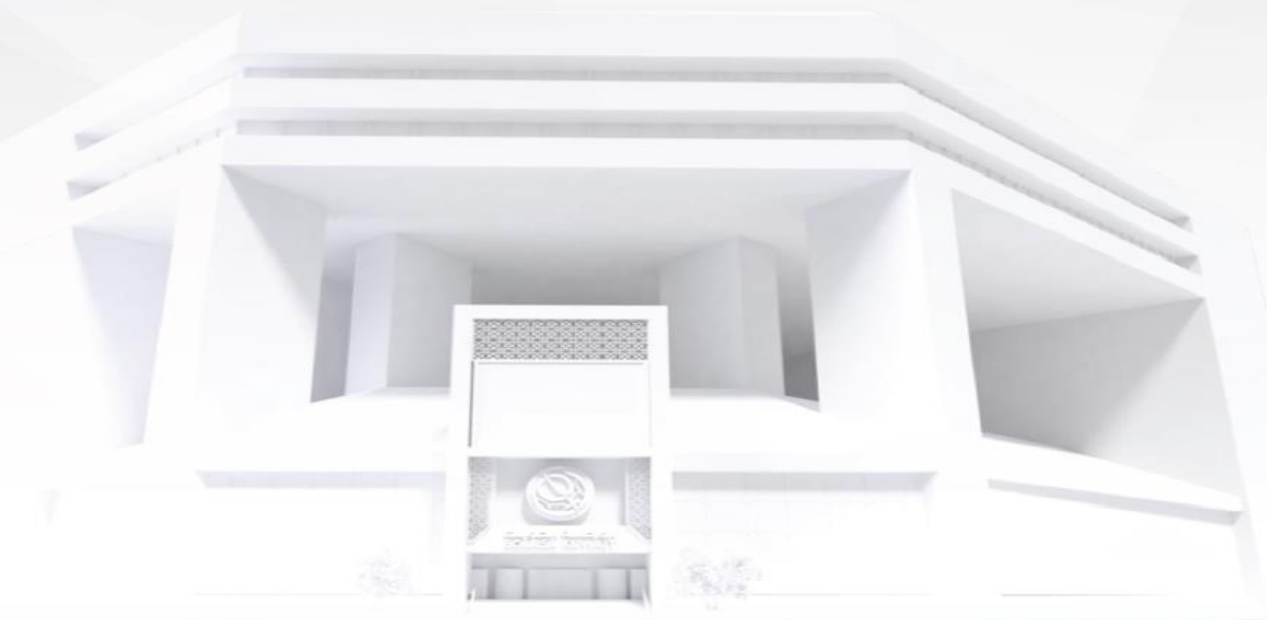




شركة الاستثمار الوطنية
NATIONAL INVESTMENTS COMPANY

Bursa Kuwait – Daily Market Report MENA Securities – Research & Studies Dep.

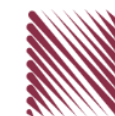
16th October 2022



www.nic.com.kw

DAILY MARKET COVERAGE REPORT

NIC MENA SECURITIES - RESEARCH AND STUDIES DEP



Kuwait Market Watch

Sunday, October 16, 2022

Index	Close	DTD Chg Net	DTD (%)	YTD (%)	52W High	52W Low	MKT CAP Bn (KD)	PBV (X)	PE (X)	DY (%)
All Share Index	6,938.05	-49.18	-0.70%	-1.49%	8,472.15	6,788.83	44.35	1.98	30.56	4.11
Premier Index	7,756.86	-70.35	-0.90%	1.54%	9,437.37	7,343.90	35.61	2.18	31.45	4.52
Main Index	5,227.30	5.08	0.10%	-11.20%	6,600.62	5,190.37	8.75	1.16	26.93	2.46
NIC 50 Index	8,687.12	-75.65	-0.86%	1.93%	10,553.82	8,195.69	34.91	2.18	31.45	4.52

Index	Value Mn(KD)	Volume (Mn share)
All Share Index	26.33	101.53
Premier Index	21.21	45.59
Main Index	5.11	55.94
NIC 50 Index	23.67	68.50

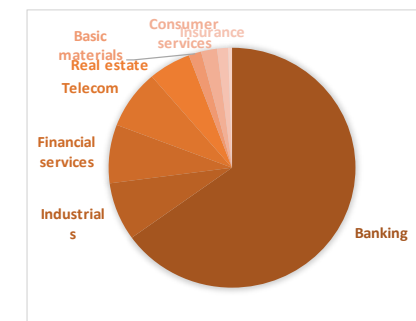
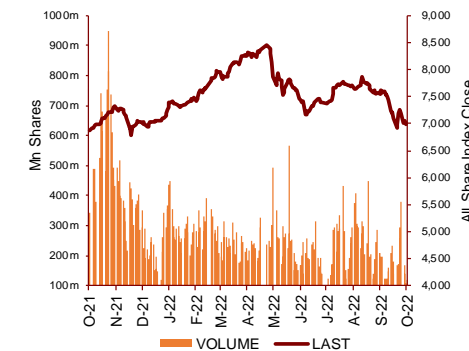
Today's Top 5 Gainer %	Close KD	Value KD	DTD (%)
Credit Rating and Collection	0.016	0.328	7.89%
Salbookh Trading	0.018	10,434	7.06%
Educational Holding Group	2.590	2,202	5.20%
National Mobile Telecommunicat	0.870	24,225.022	4.82%
Commercial Bank of Kuwait	0.487	0.487	4.51%

Today's Top 5 by Value	Close KD	Trade Val Mn(KD)	DTD (%)
Kuwait Finance House	0.764	9.43	-1.04%
National Bank of Kuwait	1.015	1.79	-0.49%
Agility Public Warehousing	0.668	1.72	-0.15%
Mobile Telecommunications	0.572	1.68	-1.38%
National Industries Group Hold	0.208	0.99	-3.70%

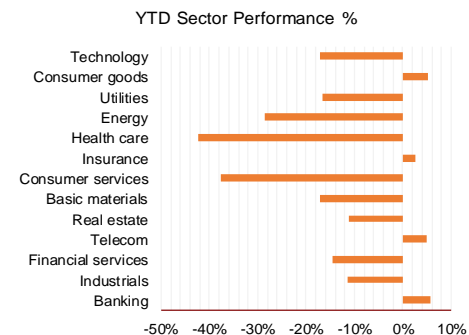
Market Breadth	UP	Down	No Chg
All Share Index	33	79	41
Premier Index	2	20	4
Main Index	31	59	37
NIC 50 Index	7	39	4

Today's Top 5 Loser %	Close KD	Value KD	DTD (%)
United Projects for Aviation	0.190	681	-9.09%
Al-Arabiya Real Estate	0.029	20,453	-8.60%
Hayat Communications	0.059	3,015	-8.59%
Al-Enmaa Real Estate	0.052	92,590	-8.48%
Al Deera Holding	0.159	1,140	-8.09%

Top 5 by Volume	Close KD	Trade Vol Mn(Shrs)	DTD (%)
Kuwait Finance House	0.764	12.31	-1.04%
AL Safat Investment	0.091	7.82	-5.11%
Commercial Real Estate	0.100	6.31	0.30%
National Consumer Holding	0.105	6.11	-0.94%
Jiyad Holding	0.023	5.64	-4.22%



Sector	Close	DTD Chg Net	DTD (%)	YTD (%)	52W High	52W Low	MKT CAP Bn (KD)	PBV (X)	PE (X)	DY (%)
Banking	1,703.73	-10.280	-0.60%	5.6%	1,992.2	1,557.8	28.499	1.59	24.09	1.92
Industrials	1,004.11	-5.970	-0.59%	-11.5%	1,443.6	976.3	3.430	0.97	19.32	4.00
Financial services	1,201.10	-15.410	-1.27%	-14.5%	1,678.3	1,190.4	3.455	0.97	29.69	3.06
Telecom	1,135.78	-6.870	-0.60%	4.9%	1,514.7	1,055.9	3.475	1.30	13.03	3.06
Real estate	1,167.39	-9.550	-0.81%	-11.3%	1,438.0	1,155.8	2.438	0.68	35.16	1.37
Basic materials	827.05	-22.310	-2.63%	-17.1%	1,233.3	846.0	0.721	1.22	8.98	6.29
Consumer services	460.82	5.140	1.13%	-37.7%	791.7	449.8	0.915	2.27	27.57	1.75
Insurance	1,570.36	-4.000	-0.25%	2.7%	1,675.7	1,434.5	0.626	0.84	45.84	5.21
Health care	459.73	0.000	0.00%	-42.3%	821.7	420.4	0.228	15.73	12.57	0.96
Energy	1,011.78	-10.290	-1.01%	-28.4%	1,592.9	975.7	0.205	0.80	21.01	2.38
Utilities	500.00	0.000	0.00%	-16.7%	650.0	497.4	0.209	2.14	14.55	9.47
Consumer goods	1,381.73	-23.090	-1.64%	5.1%	1,641.0	1,148.0	0.139	0.90	37.30	2.16
Technology	582.00	14.550	2.56%	-17.0%	843.9	539.1	0.008	0.69	NM	-
	6,938.05	-49.18	-0.70%	-1.5%	8,472.2	6,788.8	44.35	1.98	30.56	4.11



DAILY MARKET COVERAGE REPORT

NIC MENA SECURITIES - RESEARCH AND STUDIES DEP



Premier Market

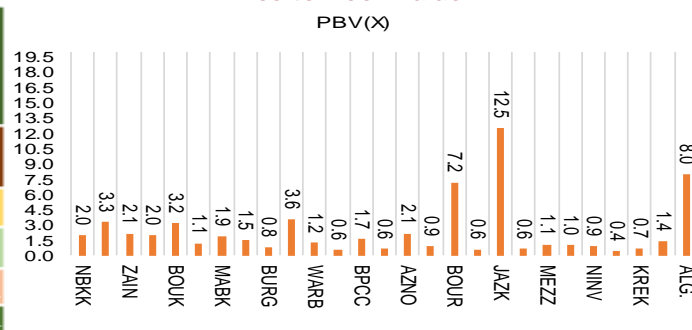
Sunday, October 16, 2022

Premier Market	Price			Valuation Multiples			MKT Cap	Price Performance		Trading Indicators		ROE	ROA	52 Week (KD)		MKT Cap
	Close (KD)	Day Δ	Day % Δ	PBV(X)	PE(X)	DY%	Mn KD	MTD(%)	YTD (%)	Value (Mn KD)	(Mn Shrs)	(%)	(%)	High	Low	%
National Bank of Kuwait	1.015	-0.005	-0.49%	1.98	18.44	2.38	7,666	4%	7%	1.79	1.76	10.9%	1.4%	1.104	0.898	21.53%
Kuwait Finance House	0.764	-0.008	-1.04%	3.31	26.21	1.41	10,109	-9%	2%	9.43	12.31	12.8%	1.6%	1.039	0.720	28.39%
Mobile Telecommunications	0.572	-0.008	-1.38%	2.11	13.71	5.69	2,475	-2%	-3%	1.68	2.91	15.6%	4.3%	0.698	0.564	6.95%
Ahli United Bank BSC	0.305	0.000	0.00%	2.04	17.93	2.72	3,400	0%	21%	0.00	0.00	11.3%	1.6%	0.336	0.240	9.55%
Boubyan Bank	0.787	-0.009	-1.13%	3.21	52.47	0.57	2,942	3%	12%	0.22	0.28	6.7%	0.8%	0.965	0.681	8.26%
Agility Public Warehousing	0.668	-0.001	-0.15%	1.14	51.38	2.49	1,687	0%	-15%	1.72	2.57	2.7%	2.2%	1.062	0.634	4.74%
Mabaneer Co.	0.827	-0.013	-1.55%	1.92	17.77	1.57	1,027	-4%	12%	0.26	0.31	11.2%	5.4%	0.910	0.715	2.88%
Gulf Bank	0.320	0.000	0.00%	1.50	18.11	2.08	1,013	7%	20%	0.44	1.38	8.5%	0.8%	0.385	0.226	2.85%
Burgan Bank	0.210	-0.007	-3.23%	0.80	18.37	2.19	689	-5%	-9%	0.48	2.27	4.3%	0.7%	0.307	0.205	1.94%
Human Soft Holding	3.251	-0.009	-0.28%	3.60	7.53	12.27	395	-1%	1%	0.10	0.03	48.7%	39.9%	3.704	3.006	1.11%
Warba Bank	0.225	0.001	0.45%	1.22	26.54	0.00	450	2%	-18%	0.81	3.59	4.8%	0.6%	0.298	0.216	1.26%
Qurain Petrochemical Industries	0.225	-0.017	-7.02%	0.60	9.26	7.44	242	-17%	-30%	0.14	0.59	6.4%	5.2%	0.403	0.240	0.68%
Boubyan Petrochemical	0.803	-0.002	-0.25%	1.65	9.11	7.45	419	-3%	-6%	0.02	0.03	19.1%	10.1%	1.125	0.769	1.18%
Kuwait Projects Company Holding	0.115	-0.004	-3.36%	0.63	305.13	4.20	281	-14%	-16%	0.15	1.33	0.2%	0.1%	0.215	0.115	0.79%
Shamal Az-Zour Al-Oula Power & Water	0.190	0.000	0.00%	2.14	14.55	9.47	209	-3%	-17%	0.05	0.25	19.1%	2.9%	0.247	0.189	0.59%
National Industries Group Holding	0.208	-0.008	-3.70%	0.91	4.97	5.14	449	-9%	-10%	0.99	4.70	15.2%	6.5%	0.314	0.205	1.26%
Boursa Kuwait Securities Co	2.082	-0.006	-0.29%	7.19	22.33	3.11	418	0%	3%	0.08	0.04	33.9%	22.2%	2.870	1.800	1.17%
Kuwait International Bank	0.189	-0.006	-3.08%	0.61	31.00	1.97	200	-5%	-7%	0.52	2.72	1.9%	0.4%	0.259	0.192	0.56%
Jazeera Airways	1.689	-0.043	-2.48%	12.52	14.00	2.66	372	2%	34%	0.62	0.36	164.8%	12.1%	2.099	0.860	1.04%
Alafco Aviation Lease and Finance	0.171	-0.002	-1.16%	0.64	NM	0.00	163	-2%	-21%	0.02	0.15	-15.9%	-3.4%	0.256	0.167	0.46%
Mezzan Holding	0.369	0.005	1.37%	1.07	37.30	4.31	115	-1%	-37%	0.42	1.15	2.8%	1.3%	0.631	0.358	0.32%
Gulf Cable and Electrical Industries	1.107	-0.017	-1.51%	1.04	10.42	5.34	230	3%	29%	0.09	0.08	11.0%	NM	1.850	0.835	0.65%
National Investments	0.228	-0.002	-0.87%	0.91	8.60	19.57	182	-1%	5%	0.23	1.00	10.9%	8.9%	0.475	0.196	0.51%
Alimtiq Investment Group	0.074	0.000	0.00%	0.43	NM	12.24	75	-3%	-38%	0.00	0.04	-1.0%	-0.1%	0.140	0.069	0.21%
Kuwait Real Estate	0.100	0.000	-0.40%	0.73	12.23	2.90	93	-1%	-42%	0.50	4.98	6.0%	2.5%	0.187	0.097	0.26%
Integrated Holding	0.346	-0.002	-0.57%	1.44	26.61	2.87	88	-9%	-6%	0.14	0.40	5.4%	3.4%	0.478	0.342	0.25%
ALI ALGanim	0.790	0.000	0.00%	7.95	12.39	0.00	219	1%	nm	0.32	0.40	27.8%	10.9%	0.966	0.750	0.62%
Total		-70.35	-0.90%	2.18	31.45	4.52	35,607	-2.5%	1.5%	21.21	45.19					100%

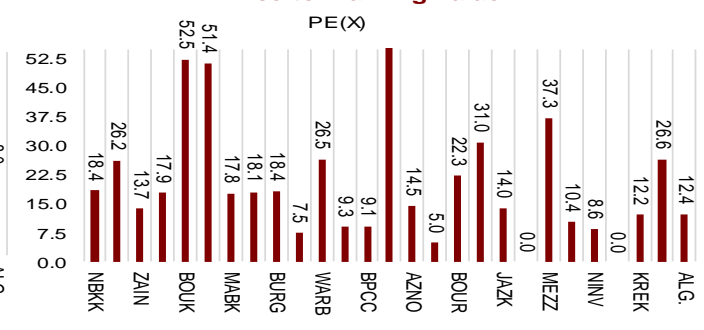
Market Capitalization



Price to Book Value

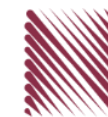


Price to Earning Value

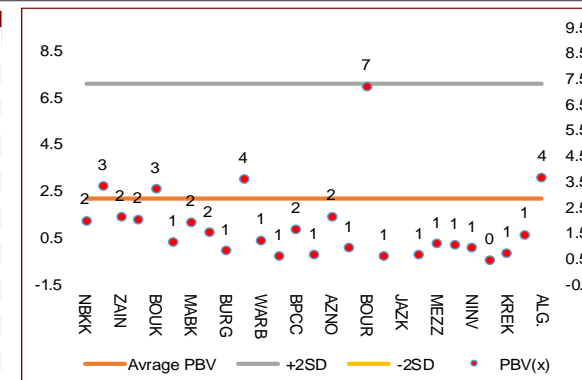


DAILY MARKET COVERAGE REPORT

NIC MENA SECURITIES - RESEARCH AND STUDIES DEP



Premier Market	Price			Valuation Multiples			MKT Cap	Price Performance		ROE	ROA
Company	Close (KD)	Day Δ	Day % Δ	PBV(X)	PE(X)	DY%	Mn KD	MTD(%)	YTD (%)	(%)	(%)
National Bank of Kuwait	1.015	-0.005	-0.49%	1.98	18.4	2.38	7,666	4.0%	7.4%	10.9%	1.4%
Kuwait Finance House	0.764	-0.008	-1.04%	3.31	26.2	1.41	10,109	-9.3%	2.1%	12.8%	1.6%
Mobile Telecommunications	0.572	-0.008	-1.38%	2.11	13.7	5.69	2,475	-1.9%	-2.5%	15.6%	4.3%
Ahli United Bank BSC	0.305	0.000	0.00%	2.04	17.9	2.72	3,400	0.0%	20.7%	11.3%	1.6%
Boubyan Bank	0.787	-0.009	-1.13%	3.21	52.5	0.57	2,942	2.9%	11.7%	6.7%	0.8%
Agility Public Warehousing	0.668	-0.001	-0.15%	1.14	51.4	2.49	1,687	0.0%	-15.0%	2.7%	2.2%
Mabaneer Co.	0.827	-0.013	-1.55%	1.92	17.8	1.57	1,027	-4.2%	12.3%	11.2%	5.4%
Gulf Bank	0.320	0.000	0.00%	1.50	18.1	2.08	1,013	6.7%	20.4%	8.5%	0.8%
Burgan Bank	0.210	-0.007	-3.23%	0.80	18.4	2.19	689	-5.4%	-9.2%	4.3%	0.7%
Human Soft Holding	3.251	-0.009	-0.28%	3.60	7.5	12.27	395	-0.7%	1.1%	48.7%	39.9%
Warba Bank	0.225	0.001	0.45%	1.22	26.5	0.00	450	1.8%	-18.2%	4.8%	0.6%
Qurain Petrochemical Industries	0.225	-0.017	-7.02%	0.60	9.3	7.44	242	-17.0%	-30.3%	6.4%	5.2%
Boubyan Petrochemical	0.803	-0.002	-0.25%	1.65	9.1	7.45	419	-3.3%	-5.5%	19.1%	10.1%
Kuwait Projects Company Holding	0.115	-0.004	-3.36%	0.63	305.1	4.20	281	-13.5%	-16.2%	0.2%	0.1%
Shamal Az-Zour Al-Oula Power & Water	0.190	0.000	0.00%	2.14	14.5	9.47	209	-2.6%	-16.7%	19.1%	2.9%
National Industries Group Holding	0.208	-0.008	-3.70%	0.91	5.0	5.14	449	-9.2%	-10.4%	15.2%	6.5%
Boursa Kuwait Securities Co	2.082	-0.006	-0.29%	7.19	22.3	3.11	418	0.1%	3.4%	33.9%	22.2%
Kuwait International Bank	0.189	-0.006	-3.08%	0.61	31.0	1.97	200	-4.5%	-7.0%	1.9%	0.4%
Jazeera Airways	1.689	-0.043	-2.48%	12.52	14.0	2.66	372	2.1%	34.3%	164.8%	12.1%
Alafco Aviation Lease and Finance	0.171	-0.002	-1.16%	0.64	NM	0.00	163	-1.7%	-20.6%	-15.9%	-3.4%
Mezzan Holding	0.369	0.005	1.37%	1.07	37.3	4.31	115	-1.3%	-37.0%	2.8%	1.3%
Gulf Cable and Electrical Industries	1.107	-0.017	-1.51%	1.04	10.4	5.34	230	3.5%	29.0%	11.0%	9.0%
National Investments	0.228	-0.002	-0.87%	0.91	8.6	19.57	182	-1.3%	5.0%	10.9%	8.9%
Alimtiiaz Investment Group	0.074	0.000	0.00%	0.43	NM	12.24	75	-2.6%	-37.7%	-1.0%	-0.1%
Kuwait Real Estate	0.100	0.000	-0.40%	0.73	12.2	2.90	93	-1.0%	-42.2%	6.0%	2.5%
Integrated Holding	0.346	-0.002	-0.57%	1.44	26.6	2.87	88	-8.9%	-5.9%	5.4%	3.4%
ALI ALGanim	0.790	0.000	0.00%	3.65	12.4	0.00	219	0.6%	nm	27.8%	10.9%
Total		-70.35	-0.90%	2.18	31.45	4.52	35,388	-2.5%	1.5%		



Premier Market	Price			Moving Average		RSI	MKT Cap	Price Performance		52 Week (KD)	
Description	Close (KD)	Day Δ	Day % Δ	50 Day	200 Day	14 Day	Mn KD	MTD(%)	YTD (%)	High	Low
Premier Index	7,757	-70.35	-0.90%	8,387	8,423	32	35,388	-2.5%	1.5%	9,437	7,344

Top 5 Performrs (Today's Price Change)

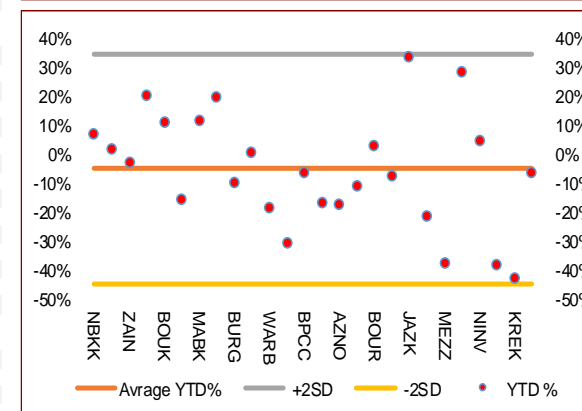
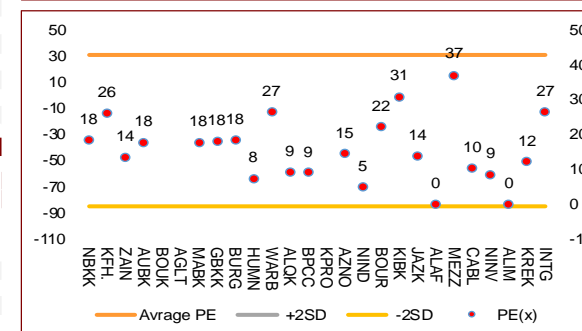
Mezzan Holding	0.369	0.005	1.37%	0.406	0.504	24	115	-1.3%	-37.0%	0.631	0.358
Warba Bank	0.225	0.001	0.45%	0.240	0.262	33	450	1.8%	-18.2%	0.298	0.216
Ahli United Bank BSC	0.305	0.000	0.00%	0.305	0.284	50	3,400	0.0%	20.7%	0.336	0.240
Gulf Bank	0.320	0.000	0.00%	0.337	0.317	45	1,013	6.7%	20.4%	0.385	0.226
Shamal Az-Zour Al-Oula Power & Water	0.190	0.000	0.00%	0.199	0.214	21	209	-2.6%	-16.7%	0.247	0.189

Middel Performrs (Today's Price Change)

Alimtiiaz Investment Group	0.074	0.000	0.00%	0.087	0.110	28	75	-2.6%	-37.7%	0.140	0.069
Agility Public Warehousing	0.668	-0.001	-0.15%	0.795	0.858	32	1,687	0.0%	-15.0%	1.062	0.634
Boubyan Petrochemical	0.803	-0.002	-0.25%	0.889	0.940	12	419	-3.3%	-5.5%	1.125	0.769
Human Soft Holding	3.251	-0.009	-0.28%	3.356	3.311	44	395	-0.7%	1.1%	3.704	3.006
Boursa Kuwait Securities Co	2.082	-0.006	-0.29%	2.297	2.356	35	418	0.1%	3.4%	2.870	1.800
Kuwait Real Estate	0.100	0.000	-0.40%	0.119	0.149	28	93	-1.0%	-42.2%	0.187	0.097
National Bank of Kuwait	1.015	-0.005	-0.49%	1.040	1.030	47	7,666	4.0%	7.4%	1.104	0.898
Integrated Holding	0.346	-0.002	-0.57%	0.395	0.401	23	88	-8.9%	-5.9%	0.478	0.342
National Investments	0.228	-0.002	-0.87%	0.275	0.313	34	182	-1.3%	5.0%	0.475	0.196
Kuwait Finance House	0.764	-0.008	-1.04%	0.100	0.100	25	10,109	-9.3%	2.1%	1.210	0.996
Boubyan Bank	0.787	-0.009	-1.13%	0.819	0.802	45	2,942	2.9%	11.7%	0.965	0.681
Alafco Aviation Lease and Finance	0.171	-0.002	-1.16%	0.189	0.206	32	163	-1.7%	-20.6%	0.256	0.167
Mobile Telecommunications	0.572	-0.008	-1.38%	0.600	0.611	48	2,475	-1.9%	-2.5%	0.698	0.564
Gulf Cable and Electrical Industries	1.107	-0.017	-1.51%	1.345	1.315	36	230	3.5%	29.0%	1.850	0.835
Mabaneer Co.	0.827	-0.013	-1.55%	0.840	0.809	27	1,027	-4.2%	12.3%	0.910	0.715

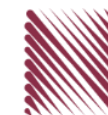
Bottom 5 Performrs (Today's Price Change)

Kuwait International Bank	0.189	-0.006	-3.08%	0.210	0.220	31	200	-4.5%	-7.0%	0.259	0.192
Burgan Bank	0.210	-0.007	-3.23%	0.233	0.254	31	689	-5.4%	-9.2%	0.307	0.205
Kuwait Projects Company Holding	0.115	-0.004	-3.36%	0.148	0.163	22	281	-13.5%	-16.2%	0.215	0.115
National Industries Group Holding	0.208	-0.008	-3.70%	0.259	0.260	21	449	-9.2%	-10.4%	0.314	0.205
Qurain Petrochemical Industries	0.225	-0.017	-7.02%	0.301	0.348	8	242	-17.0%	-30.3%	0.403	0.240



DAILY MARKET COVERAGE REPORT

NIC MENA SECURITIES - RESEARCH AND STUDIES DEP



Banking Sector	Price			Valuation Multiples			MKT Cap	Price Performance		Trading Indicators		ROE	ROA	52 Week (KD)		MKT Cap
Company	Close (KD)	Day Δ	Day % Δ	PBV(X)	PE(X)	DY%	Mn KD	MTD(%)	YTD (%)	Value (Mn KD)	(Mn Shrs)	(%)	(%)	High	Low	%
National Bank of Kuwait	1.015	-0.005	-0.49%	1.98	18.44	2.38	7,666	4.0%	7.4%	1.79	1.76	10.9%	1.4%	1.104	0.898	17.28%
Kuwait Finance House	0.764	-0.008	-1.04%	3.31	26.21	1.41	10,109	-9.3%	2.1%	9.43	12.31	12.8%	1.6%	1.039	0.720	22.79%
Ahli United Bank BSC	0.305	0.000	0.00%	2.04	17.93	2.72	3,400	0.0%	20.7%	0.00	0.00	11.3%	1.6%	0.336	0.240	7.67%
Boubyan Bank	0.787	-0.009	-1.13%	3.21	52.47	0.57	2,942	2.9%	11.7%	0.22	0.28	6.7%	0.8%	0.965	0.681	6.63%
Commercial Bank of Kuwait	0.487	0.021	4.51%	1.10	11.62	4.29	965	0.4%	-7.0%	0.00	0.00	9.9%	1.9%	0.549	0.456	2.18%
Gulf Bank	0.320	0.000	0.00%	1.50	18.11	2.08	1,013	6.7%	20.4%	0.44	1.38	8.5%	0.8%	0.385	0.226	2.28%
Burgan Bank	0.210	-0.007	-3.23%	0.80	18.37	2.19	689	-5.4%	-9.2%	0.48	2.27	4.3%	0.7%	0.307	0.205	1.55%
Ahli United Bank	0.258	0.000	0.00%	0.89	23.78	1.85	581	-1.1%	-12.3%	0.05	0.20	3.7%	0.7%	0.324	0.250	1.31%
Warba Bank	0.225	0.001	0.45%	1.22	26.54	0.00	450	1.8%	-18.2%	0.81	3.59	4.8%	0.6%	0.298	0.216	1.01%
Al Ahli Bank of Kuwait	0.273	-0.005	-1.80%	0.82	20.56	1.71	483	-7.5%	14.9%	0.03	0.10	4.0%	0.6%	0.355	0.215	1.09%
Kuwait International Bank	0.189	-0.006	-3.08%	0.61	31.00	1.97	200	-4.5%	-7.0%	0.52	2.72	1.9%	0.4%	0.259	0.192	0.45%
Total Banking Sector - 11 Companies							28,499			13.76	24.60					64.25%

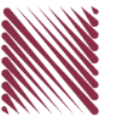
Basic Materials	Price			Valuation Multiples			MKT Cap	Price Performance		Trading Indicators		ROE	ROA	52 Week (KD)		MKT Cap
Company	Close (KD)	Day Δ	Day % Δ	PBV(X)	PE(X)	DY%	Mn KD	MTD(%)	YTD (%)	Value (Mn KD)	(Mn Shrs)	(%)	(%)	High	Low	%
Qurain Petrochemical Industries	0.225	-0.017	-7.02%	0.60	9.26	7.44	242	-16.97%	-30.26%	0.14	0.59	6.4%	5.2%	0.403	0.240	0.54%
Boubyan Petrochemical	0.803	-0.002	-0.25%	1.65	9.11	7.45	419	-3.25%	-5.52%	0.02	0.03	19.1%	10.1%	1.125	0.769	0.94%
Al Kout Industrial Projects	0.390	0.000	0.00%	1.40	4.93	10.26	39	-3.94%	-21.37%	0.00	0.00	30.5%	20.1%	0.545	0.390	0.09%
Kuwait Foundry	0.294	-0.002	-0.68%	1.23	12.61	0.00	21	1.38%	-19.78%	0.00	0.00	10.7%	10.3%	0.424	0.260	0.05%
Total Basic Materials - 4 Companies							721			0.16	0.61					1.63%

Consumer Goods	Price			Valuation Multiples			MKT Cap	Price Performance		Trading Indicators		ROE	ROA	52 Week (KD)		MKT Cap
Company	Close (KD)	Day Δ	Day % Δ	PBV(X)	PE(X)	DY%	Mn KD	MTD(%)	YTD (%)	Value (Mn KD)	(Mn Shrs)	(%)	(%)	High	Low	%
Mezzan Holding	0.369	0.005	1.37%	1.07	37.30	4.31	115	-1.3%	-37.0%	0.42	1.15	2.8%	1.3%	0.631	0.358	0.26%
Livestock Transport and Trading	0.118	0.000	0.00%	0.73	NM	0.00	25	-1.7%	-35.2%	0.00	0.00	-14.5%	-8.2%	0.196	0.114	0.06%
Total Consumer Goods - 2 Companies							139			0.42	1.15					0.31%

Consumer Services	Price			Valuation Multiples			MKT Cap	Price Performance		Trading Indicators		ROE	ROA	52 Week (KD)		MKT Cap
Company	Close (KD)	Day Δ	Day % Δ	PBV(X)	PE(X)	DY%	Mn KD	MTD(%)	YTD (%)	Value (Mn KD)	(Mn Shrs)	(%)	(%)	High	Low	%
Jazeera Airways	1.689	-0.043	-2.48%	12.52	14.00	2.66	372	2.1%	34.3%	0.62	0.36	164.8%	12.1%	2.099	0.860	0.84%
Kuwait National Cinema	0.850	-0.035	-3.95%	1.08	8.62	3.39	79	-4.5%	0.3%	0.00	0.00	13.3%	6.1%	0.933	0.815	0.18%
Oula Fuel Marketing	0.146	0.001	0.69%	0.90	15.64	3.45	59	0.7%	-7.1%	0.00	0.01	5.6%	2.9%	0.178	0.140	0.13%
Al Soor Fuel Marketing	0.145	-0.004	-2.68%	0.88	19.01	3.36	59	-3.3%	-3.9%	0.00	0.03	4.8%	3.6%	0.175	0.142	0.13%
Sultan Center Food Products	0.105	-0.001	-0.94%	0.61	0.85	0.00	29	-8.7%	-49.5%	0.01	0.07	74.2%	12.2%	0.269	0.103	0.07%
Jiyad Holding	0.023	-0.001	-4.22%	0.27	NM	0.00	4	-15.0%	-70.6%	0.13	5.64	-16.2%	-10.9%	0.099	0.015	0.01%
IFA Hotels and Resorts	0.026	-0.001	-3.35%	3.55	179.33	0.00	17	-6.1%	-49.7%	0.14	5.39	2.0%	0.4%	0.073	0.025	0.04%
Kuwait Resorts	0.075	-0.001	-1.32%	0.49	10.63	3.90	15	-4.0%	-21.7%	0.00	0.02	4.8%	4.2%	0.110	0.067	0.03%
Future Kid Entertainment and Real Estate	0.105	-0.005	-4.55%	0.95	9.62	0.00	12	-3.7%	39.8%	0.00	0.03	10.4%	4.7%	0.130	0.074	0.03%
Al Eid Food	0.227	0.005	2.25%	1.75	13.50	3.08	38	2.7%	-3.8%	0.15	0.69	13.5%	10.1%	0.304	0.207	0.09%
Kuwait Hotels	0.163	-0.007	-4.12%	2.13	19.68	2.94	9	-11.4%	142.9%	0.00	0.01	11.1%	7.4%	0.201	0.070	0.02%
Palms Agro Production	0.077	0.000	0.00%	0.78	NM	0.00	4	0.0%	12.3%	0.00	0.00	-13.8%	-10.9%	0.090	0.043	0.01%
ALI ALGanim	0.790	0.000	0.00%	3.65	12.39	0.00	219	0.6%	nm	0.32	0.40	27.8%	10.9%	0.966	0.750	0.49%
Total Consumer Services - 13 Companies							915			1.38	12.64					2.06%

DAILY MARKET COVERAGE REPORT

NIC MENA SECURITIES - RESEARCH AND STUDIES DEP



Financial Services	Price			Valuation Multiples			MKT Cap	Price Performance		Trading Indicators		ROE	ROA	52 Week (KD)		MKT Cap
	Company	Close (KD)	Day Δ	Day % Δ	PBV(X)	PE(X)	DY%	Mn KD	MTD (%)	YTD (%)	Value (Mn KD)	(Mn Shrs)	(%)	(%)	High	Low
Egypt Kuwait Holding	0.387	0.000	0.00%	2.19	5.93	5.52	436	0.8%	-8.7%	0.00	0.00	37.1%	17.5%	0.465	0.353	0.98%
Kuwait Projects Company Holding	0.115	-0.004	-3.36%	0.63	305.13	4.20	281	-13.5%	-16.2%	0.15	1.33	0.2%	0.1%	0.215	0.115	0.63%
National Industries Group Holding	0.208	-0.008	-3.70%	0.91	4.97	5.14	449	-9.2%	-10.4%	0.99	4.70	15.2%	6.5%	0.314	0.205	1.01%
Boursa Kuwait Securities Co	2.082	-0.006	-0.29%	7.19	22.33	3.11	418	0.1%	3.4%	0.08	0.04	33.9%	22.2%	2.870	1.800	0.94%
GFH Financial Group	0.073	0.000	-0.14%	0.89	9.55	4.94	255	-5.5%	-25.2%	0.27	3.63	9.3%	1.2%	0.109	0.066	0.58%
National Investments	0.228	-0.002	-0.87%	0.91	8.60	19.57	182	-1.3%	5.0%	0.23	1.00	10.9%	8.9%	0.475	0.196	0.41%
Tamdeen Investment	0.500	0.000	0.00%	0.58	12.93	2.00	170	5.3%	31.9%	0.00	0.00	4.9%	3.8%	0.530	0.309	0.38%
Alimtiq Investment Group	0.074	0.000	0.00%	0.43	NM	12.24	75	-2.6%	-37.7%	0.00	0.04	-1.0%	-0.1%	0.140	0.069	0.17%
Commercial Facilities	0.170	-0.002	-1.16%	0.55	6.37	8.72	86	-1.2%	-16.5%	0.02	0.13	8.8%	5.0%	0.228	0.165	0.19%
Aayan Leasing and Investment	0.106	-0.002	-1.85%	0.82	11.08	0.00	70	-5.4%	-34.7%	0.08	0.79	7.7%	5.8%	0.204	0.104	0.16%
Kuwait Investment	0.123	-0.001	-0.81%	0.60	7.19	20.16	67	-4.7%	-55.9%	0.03	0.27	8.1%	4.6%	0.317	0.113	0.15%
Noor Financial Investment	0.173	-0.002	-1.14%	1.08	4.89	2.74	88	-3.9%	-31.2%	0.01	0.05	22.7%	16.0%	0.319	0.163	0.20%
Arzan Financial Group for Financing and Investmei	0.116	0.000	0.00%	0.78	7.28	2.08	93	-4.1%	-25.4%	0.10	0.87	11.3%	8.2%	0.180	0.109	0.21%
Kuwait Financial Centre	0.102	-0.006	-5.56%	0.53	8.17	8.82	51	-15.0%	-37.3%	0.01	0.13	6.9%	4.0%	0.197	0.101	0.12%
Gulf Investment House	0.405	0.002	0.50%	3.84	NM	0.00	165	-0.7%	34.3%	0.00	0.00	-3.0%	-2.0%	0.422	0.217	0.37%
Arabi Group Holdings	0.245	-0.003	-1.21%	1.48	NM	0.00	40	-8.9%	-14.8%	0.00	0.01	-29.0%	-4.0%	0.499	0.142	0.09%
Kuwait and Middle East Financial Investment	0.110	0.000	0.00%	0.95	12.81	6.36	24	-4.3%	-26.7%	0.00	0.00	7.5%	5.2%	0.175	0.105	0.05%
Privatization Holding	0.034	0.000	0.29%	0.28	NM	0.00	21	-5.6%	-38.1%	0.00	0.00	-7.1%	-5.5%	0.070	0.032	0.05%
Asiya Capital Investments	0.038	-0.001	-2.34%	0.35	2.12	0.00	29	-6.7%	-26.2%	0.03	0.73	17.9%	17.6%	0.071	0.038	0.07%
Umm Al Qaiwain General Investment Co	0.093	0.000	0.00%	0.57	4.97	5.38	34	0.0%	6.7%	0.00	0.00	12.0%	10.0%	0.108	0.077	0.08%
Securities House	0.057	0.002	2.87%	0.56	9.54	0.00	24	0.5%	-43.5%	0.06	1.01	5.8%	5.0%	0.115	0.052	0.06%
Kamco Investment	0.095	-0.001	-1.04%	0.53	3.80	10.42	33	-3.9%	-25.6%	0.01	0.13	14.5%	6.9%	0.167	0.089	0.07%
First Investment	0.074	-0.001	-1.33%	0.66	107.14	0.00	33	3.4%	-10.9%	0.01	0.09	0.6%	0.7%	0.104	0.068	0.07%
Inovest BSC Public	0.074	-0.002	-2.50%	0.00	NM	0.00	22	-5.5%	-35.7%	0.05	0.68	2.7%	1.7%	0.189	0.070	0.05%
Coast Investment and Development	0.074	-0.002	-2.00%	0.74	10.26	6.67	34	-7.5%	-28.6%	0.00	0.04	7.2%	6.8%	0.126	0.066	0.08%
Al Madar Investment	0.101	0.000	0.00%	0.95	59.06	0.00	21	0.7%	-15.1%	0.00	0.00	1.6%	1.7%	0.128	0.083	0.05%
Bayan Investment	0.035	0.000	0.00%	0.31	NM	0.00	13	0.0%	-28.8%	0.00	0.00	-0.5%	-0.6%	0.060	0.031	0.03%
Al Manar Financing and Leasing	0.056	0.000	0.00%	0.55	18.24	0.00	15	6.1%	-10.2%	0.00	0.00	2.9%	2.3%	0.079	0.049	0.03%
Manazel Holding	0.026	-0.001	-3.70%	0.59	9.25	0.00	11	-8.5%	-47.3%	0.04	1.72	6.2%	2.0%	0.060	0.025	0.03%
Kuwait Finance and Investment	0.064	-0.002	-3.03%	0.49	28.70	0.00	20	0.0%	-24.0%	0.00	0.00	1.7%	1.6%	0.104	0.057	0.04%
National International Holding	0.095	-0.003	-2.58%	0.56	7.24	5.00	21	-12.5%	-34.3%	0.02	0.21	7.6%	5.3%	0.168	0.091	0.05%
Osoul Investment	0.073	-0.004	-4.94%	0.70	NM	13.75	9	1.1%	-5.8%	0.00	0.01	-4.4%	-4.0%	0.118	0.062	0.02%
UniCap Investment and Finance	0.053	0.000	0.00%	0.59	62.35	0.00	12	-8.1%	-22.6%	0.00	0.00	1.9%	0.2%	0.097	0.050	0.03%
Amar Finance and Leasing	0.064	0.000	0.00%	0.59	3.45	0.00	12	0.0%	-2.7%	0.00	0.00	18.6%	17.3%	0.097	0.058	0.03%
Gulf North Africa Holding	0.137	0.003	2.24%	1.72	59.40	0.00	20	1.5%	55.6%	0.22	1.62	3.0%	2.4%	0.141	0.057	0.05%
International Financial Advisors	0.088	-0.001	-1.56%	0.58	36.06	0.00	22	-2.3%	-20.5%	0.01	0.10	1.9%	0.7%	0.129	0.082	0.05%
Credit Rating and Collection	0.016	0.001	7.89%	0.52	NM	0.00	3	-4.7%	-62.2%	0.00	0.00	-0.4%	-0.3%	0.069	0.014	0.01%
Ekttitab Holding	0.010	-0.001	-6.60%	0.34	NM	0.00	3	-10.0%	-50.2%	0.02	1.62	-16.8%	-12.9%	0.024	0.009	0.01%
Kuwait Syrian Holding Co	0.035	0.000	0.00%	0.34	5.65	0.00	6	-5.4%	-18.2%	0.00	0.00	8.7%	6.2%	0.060	0.026	0.01%
Warba Capital Holding	0.098	0.000	0.00%	1.09	NM	0.00	10	0.0%	14.0%	0.00	0.00	-0.8%	-0.7%	0.128	0.070	0.02%
National Consumer Holding	0.105	-0.001	-0.94%	4.80	NM	0.00	32	-6.2%	-11.6%	0.64	6.11	-8.0%	-7.5%	0.186	0.097	0.07%
Al Deera Holding	0.159	-0.014	-8.09%	1.16	8.72	0.00	15	-4.8%	-13.5%	0.00	0.01	12.5%	6.5%	0.200	0.145	0.03%
AL Safat Investment	0.091	-0.005	-5.11%	1.22	NM	0.00	26	-18.8%	-21.4%	0.73	7.82	-1.8%	-1.6%	0.270	0.094	0.06%
Gulf Franchising Holding	0.077	-0.004	-4.94%	1.59	NM	0.00	3	-7.1%	-15.5%	0.00	0.00	-5.7%	-1.6%	0.148	0.051	0.01%
Total Financial Services - 44 Companies							3,455			3.82	34.89					7.79%

DAILY MARKET COVERAGE REPORT

NIC MENA SECURITIES - RESEARCH AND STUDIES DEP

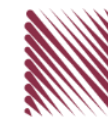


Health Care	Price			Valuation Multiples			MKT Cap	Price Performance		Trading Indicators		ROE	ROA	52 Week (KD)		MKT Cap
	Company	Close (KD)	Day Δ	Day % Δ	PBV(X)	PE(X)		DY%	Mn KD	MTD(%)	YTD (%)			Value (Mn KD)	(Mn Shrs)	
Al-Maidan Clinic for Oral Health Services	0.632	0.000	0.00%	2.51	13.90	0.00	142	0.0%	-54.1%	0.00	0.00	19.4%	12.5%	1.400	0.556	0.32%
Advanced Technology	0.520	0.000	0.00%	1.16	11.23	2.88	78	0.0%	0.4%	0.00	0.00	10.7%	2.1%	0.595	0.450	0.18%
Yiaco Medical	0.450	0.000	0.00%	43.51	NM	0.00	8	0.0%	2.7%	0.00	0.00	-161.7%	-4.7%	0.480	0.399	0.02%
Total Health Care - 3 Companies							228			0.00	0.00					0.51%

Industrials	Price			Valuation Multiples			MKT Cap	Price Performance		Trading Indicators		ROE	ROA	52 Week (KD)		MKT Cap
	Company	Close (KD)	Day Δ	Day % Δ	PBV(X)	PE(X)		DY%	Mn KD	MTD(%)	YTD (%)			Value (Mn KD)	(Mn Shrs)	
Agility Public Warehousing	0.668	-0.001	-0.15%	1.14	51.38	2.49	1,687	0.0%	-15.0%	1.72	2.57	2.7%	2.2%	1.062	0.634	3.80%
Human Soft Holding	3.251	-0.009	-0.28%	3.60	7.53	12.27	395	-0.7%	1.1%	0.10	0.03	48.7%	39.9%	3.704	3.006	0.89%
Alafco Aviation Lease and Finance	0.171	-0.002	-1.16%	0.64	NM	0.00	163	-1.7%	-20.6%	0.02	0.15	-15.9%	-3.4%	0.256	0.167	0.37%
Kuwait Cement	0.196	-0.003	-1.51%	0.73	NM	2.51	140	-5.3%	-13.9%	0.01	0.04	-1.1%	-0.7%	0.295	0.198	0.32%
Gulf Cable and Electrical Industries	1.107	-0.017	-1.51%	1.04	10.42	5.34	230	3.5%	29.0%	0.09	0.08	11.0%	9.0%	1.850	0.835	0.52%
Integrated Holding	0.346	-0.002	-0.57%	1.44	26.61	2.87	88	-8.9%	-5.9%	0.14	0.40	5.4%	3.4%	0.478	0.342	0.20%
Kuwait Portland Cement	0.785	-0.033	-4.03%	1.15	17.11	8.56	79	-3.6%	-16.5%	0.00	0.00	6.8%	5.3%	1.240	0.751	0.18%
Educational Holding Group	2.590	0.128	5.20%	4.18	9.35	21.64	54	-13.7%	-38.5%	0.00	0.00	30.0%	17.2%	5.073	2.462	0.12%
United Projects for Aviation Services	0.190	-0.019	-9.09%	0.76	74.64	0.00	72	-14.0%	-15.7%	0.00	0.00	1.0%	0.6%	0.318	0.182	0.16%
Heavy Engineering Industries and Shipbuilding	0.627	-0.013	-2.03%	1.72	21.14	3.13	113	-2.6%	25.7%	0.61	0.96	8.2%	3.2%	0.960	0.442	0.25%
National Industries	0.200	0.000	0.00%	0.80	11.66	5.00	70	10.5%	3.6%	0.00	0.00	6.8%	5.1%	0.260	0.181	0.16%
ACICO Industries	0.083	0.000	0.12%	0.37	NM	0.00	27	-5.7%	-40.4%	0.03	0.33	-1.9%	-0.5%	0.208	0.076	0.06%
Kuwait Company for Process Plant Construction a	0.300	-0.006	-1.96%	1.23	19.83	8.09	36	-0.3%	-35.5%	0.01	0.03	6.1%	3.5%	0.522	0.286	0.08%
Ras Al Khaimah for White Cement and Constructi	0.138	0.000	0.00%	1.23	27.51	6.01	69	-6.1%	9.5%	0.00	0.00	4.6%	3.7%	0.175	0.090	0.16%
Combined Group Contracting	0.389	0.005	1.30%	1.43	5.89	6.51	67	-2.5%	8.5%	0.04	0.11	26.3%	5.8%	0.500	0.308	0.15%
Kuwait and Gulf Link Transport	0.059	0.002	4.21%	0.34	3.08	0.00	16	5.1%	-16.4%	0.00	0.01	11.6%	2.6%	0.106	0.052	0.04%
Shuaiba Industrial	0.154	0.006	4.05%	0.82	12.31	8.11	15	-4.9%	-34.2%	0.00	0.01	6.6%	5.4%	0.310	0.137	0.03%
National Cleaning	0.037	-0.001	-1.35%	0.29	NM	0.00	8	7.7%	-35.0%	0.00	0.04	-13.9%	-4.1%	0.080	0.031	0.02%
Fujairah Cement Industries	0.039	0.000	0.00%	0.21	NM	0.00	14	-1.3%	-27.8%	0.00	0.00	-12.7%	-6.3%	0.069	0.028	0.03%
Mubarrad Holding	0.074	0.001	1.37%	0.57	6.18	6.85	12	-3.8%	-33.6%	0.00	0.06	9.3%	8.2%	0.130	0.071	0.03%
Specialities Group Holding	0.086	0.000	-0.23%	0.46	9.37	7.88	14	2.4%	-30.6%	0.00	0.00	5.0%	3.6%	0.157	0.076	0.03%
Salbookh Trading	0.018	0.001	7.06%	0.51	NM	0.00	2	-3.2%	-60.8%	0.01	0.56	-51.7%	-28.6%	0.072	0.016	0.00%
Metal and Recycling	0.067	0.000	-0.15%	0.87	NM	0.00	6	-9.5%	-29.4%	0.00	0.00	-12.0%	-2.0%	0.136	0.061	0.01%
Equipment Holding	0.031	-0.002	-4.60%	0.52	NM	0.00	2	-8.5%	-40.2%	0.00	0.02	-11.1%	-3.2%	0.079	0.030	0.01%
Jassim Transport & Stevedoring	0.329	0.000	0.00%	1.11	14.35	4.86	49	0.0%	-19.2%	0.01	0.12	8.0%	6.3%	0.450	0.307	0.11%
Total Industrials - 24 Companies							3,430			2.82	5.53					7.73%

DAILY MARKET COVERAGE REPORT

NIC MENA SECURITIES - RESEARCH AND STUDIES DEP



Insurance	Price			Valuation Multiples			MKT Cap	Price Performance		Trading Indicators		ROE	ROA	52 Week (KD)		MKT Cap
Company	Close (KD)	Day Δ	Day % Δ	PBV(X)	PE(X)	DY%	Mn KD	MTD(%)	YTD (%)	Value (Mn KD)	(Mn Shrs)	(%)	(%)	High	Low	%
Gulf Insurance Group	1.015	0.000	0.00%	1.18	4.35	10.44	288	2.0%	-5.1%	0.00	0.00	28.6%	5.5%	1.200	0.867	0.65%
Al Ahleia Insurance	0.563	0.000	0.00%	0.94	7.77	6.22	122	18.3%	11.5%	0.00	0.00	12.5%	4.4%	0.612	0.453	0.28%
Kuwait Insurance	0.475	-0.005	-1.04%	0.72	7.44	6.88	88	5.6%	24.0%	0.16	0.34	10.4%	6.1%	0.497	0.379	0.20%
Kuwait Reinsurance	0.295	0.000	0.00%	1.07	10.42	1.55	70	0.0%	16.9%	0.00	0.00	10.8%	3.4%	0.373	0.217	0.16%
Bahrain Kuwait Insurance	0.191	0.000	0.00%	1.33	11.98	8.44	29	0.0%	0.0%	0.00	0.00	11.0%	2.1%	0.191	0.191	0.06%
Warba Insurance and Reinsurance	0.120	-0.003	-2.44%	0.53	8.55	8.13	20	-7.0%	-22.6%	0.00	0.00	6.2%	2.1%	0.176	0.119	0.05%
First Takaful Insurance	0.046	-0.002	-3.16%	0.63	296.88	0.00	5	-3.2%	-5.0%	0.00	0.00	0.2%	0.1%	0.081	0.034	0.01%
Wethaq Takaful Insurance	0.037	0.000	0.00%	0.33	19.37	0.00	4	3.6%	-27.3%	0.00	0.00	1.7%	1.7%	0.102	0.024	0.01%
Total Insurance - 8 Companies							626			0.16	0.35					1.41%

Energy	Price			Valuation Multiples			MKT Cap	Price Performance		Trading Indicators		ROE	ROA	52 Week (KD)		MKT Cap
Company	Close (KD)	Day Δ	Day % Δ	PBV(X)	PE(X)	DY%	Mn KD	MTD(%)	YTD (%)	Value (Mn KD)	(Mn Shrs)	(%)	(%)	High	Low	%
National Petroleum Services	0.696	-0.032	-4.40%	1.84	13.05	4.81	68	-7.2%	-11.2%	0.00	0.00	14.5%	11.6%	0.880	0.625	0.15%
Independent Petroleum Group	0.431	0.001	0.23%	0.79	14.40	6.98	78	-8.9%	-26.9%	0.00	0.00	5.5%	1.0%	0.614	0.368	0.18%
Burgan for Well Drilling Trading and Maintenance	0.121	0.005	4.31%	0.40	9.11	2.51	29	5.2%	-18.9%	0.00	0.00	4.4%	1.4%	0.172	0.100	0.07%
Energy House Holding	0.021	0.000	1.49%	0.73	NM	0.00	15	6.8%	-68.0%	0.00	0.04	-1.4%	-2.5%	0.086	0.019	0.03%
Gulf Petroleum Investment	0.015	0.000	-2.55%	0.22	NM	0.00	7	-5.6%	-35.9%	0.01	0.53	-4.0%	-2.6%	0.031	0.013	0.02%
Senegy Holding	0.038	-0.002	-4.76%	0.80	47.50	0.00	8	-5.0%	-18.6%	0.00	0.00	1.7%	1.4%	0.063	0.036	0.02%
Total Energy - 6 Companies							205			0.01	0.57					0.46%

DAILY MARKET COVERAGE REPORT

NIC MENA SECURITIES - RESEARCH AND STUDIES DEP



Real Estate	Price		Valuation Multiples				MKT Cap	Performance		Trading Indicators		ROE	ROA	2 Week (KD)		MKT Cap
Company	Close (KD)	Day Δ	Day % Δ	PBV(X)	PE(X)	DY%	Mn KD	MTD(%)	YTD (%)	Value (Mn KD)	(Mn Shrs)	(%)	(%)	High	Low	%
Mabane Co.	0.827	-0.013	-1.55%	1.92	17.77	1.57	1,027	-4.2%	12.3%	0.26	0.31	11.2%	5.4%	0.910	0.715	2.32%
Salhia Real Estate	0.446	-0.004	-0.89%	1.49	19.23	3.17	230	0.0%	-10.7%	0.28	0.62	7.9%	3.2%	0.578	0.428	0.52%
Commercial Real Estate	0.100	0.000	0.30%	0.61	10.25	5.02	176	0.9%	-20.2%	0.63	6.31	6.2%	3.3%	0.140	0.094	0.40%
National Real Estate	0.133	0.001	0.76%	0.74	1.19	0.00	247	-0.7%	-28.3%	0.02	0.15	64.5%	38.6%	0.212	0.125	0.56%
Tamdeen Real Estate	0.308	0.008	2.67%	0.58	6.91	3.33	124	-5.2%	-11.5%	0.00	0.00	9.2%	3.9%	0.375	0.296	0.28%
Kuwait Real Estate	0.100	0.000	-0.40%	0.73	12.23	2.90	93	-1.0%	-42.2%	0.50	4.98	6.0%	2.5%	0.187	0.097	0.21%
United Real Estate	0.075	0.000	0.00%	0.47	234.06	0.00	80	-3.6%	-0.7%	0.00	0.00	0.2%	-0.1%	0.121	0.064	0.18%
First Dubai for Real Estate Development	0.046	0.000	0.22%	0.44	30.54	0.00	34	-0.7%	-56.7%	0.01	0.19	1.5%	1.2%	0.120	0.044	0.08%
Al Mazaya Holding	0.045	0.000	0.89%	0.46	40.82	0.00	29	-3.6%	-41.3%	0.00	0.00	1.1%	0.6%	0.089	0.043	0.06%
Ajial Real Estate Entertainment	0.282	0.000	0.00%	0.42	17.40	1.77	55	2.5%	-7.2%	0.00	0.00	2.4%	2.0%	0.345	0.268	0.12%
Injazzat Real Estate Development	0.076	0.000	0.13%	0.46	6.46	6.58	26	-9.4%	-24.0%	0.00	0.04	7.0%	3.6%	0.114	0.070	0.06%
Munshaat Real Estate Projects	0.058	-0.003	-4.95%	1.87	11.46	0.00	19	-17.7%	-15.2%	0.00	0.02	17.4%	1.5%	0.081	0.052	0.04%
Aayan Real Estate	0.062	0.000	0.00%	0.44	59.62	0.00	26	1.1%	-29.9%	0.00	0.00	0.7%	1.4%	0.105	0.056	0.06%
Al Argan International Real Estate	0.084	-0.001	-1.18%	0.28	31.14	0.00	21	10.5%	-27.4%	0.00	0.01	0.9%	0.3%	0.144	0.073	0.05%
Al-Enmaa Real Estate	0.052	-0.005	-8.48%	0.62	NM	0.00	23	-23.7%	-24.0%	0.09	1.73	-5.9%	NM	0.091	0.056	0.05%
Arkan Al Kuwait Real Estate	0.125	0.000	0.00%	0.88	12.18	4.80	31	2.5%	0.8%	0.00	0.00	7.4%	2.3%	0.152	0.113	0.07%
Kuwait Business Town Real Estate	0.047	-0.004	-7.84%	0.64	14.21	0.00	27	-5.4%	-37.3%	0.02	0.38	3.8%	2.8%	0.100	0.046	0.06%
Dalqan Real Estate	0.215	0.003	1.42%	1.90	196.30	0.00	13	0.5%	-2.3%	0.03	0.14	1.0%	1.0%	0.280	0.195	0.03%
Sokouk Holding	0.025	0.001	2.86%	0.57	NM	0.00	14	-6.3%	-24.8%	0.00	0.18	-2.9%	-1.7%	0.038	0.020	0.03%
Tijara and Realestate Investment	0.048	0.000	0.00%	0.43	7.30	6.29	18	0.4%	-21.9%	0.02	0.38	6.0%	3.2%	0.089	0.044	0.04%
Al-Arabiya Real Estate	0.029	-0.003	-8.60%	0.38	NM	0.00	14	-5.6%	-25.1%	0.02	0.70	-23.1%	-7.3%	0.052	0.026	0.03%
Aqar Real Estate Investments	0.059	0.000	-0.68%	0.49	18.91	5.63	14	-0.2%	-24.9%	0.00	0.08	2.6%	2.1%	0.098	0.052	0.03%
Mashaer Holding	0.053	0.001	0.96%	0.62	NM	0.00	9	-1.3%	-25.6%	0.00	0.01	-6.5%	-3.2%	0.086	0.049	0.02%
Dar Al Thuraya Real Estate	0.170	0.000	0.00%	1.47	25.07	0.00	25	0.0%	61.9%	0.00	0.00	6.0%	5.3%	0.172	0.092	0.06%
Osos Holding Group	0.101	-0.004	-3.81%	0.92	8.36	9.52	11	4.1%	0.0%	0.00	0.03	11.2%	7.1%	0.147	0.094	0.02%
Al Massaleh Real Estate	0.033	0.000	0.30%	0.54	NM	0.00	8	-20.7%	-36.9%	0.00	0.02	-15.4%	-3.2%	0.060	0.031	0.02%
Kuwait Remal Real Estate	0.011	0.000	0.00%	1.44	NM	0.00	3	-1.8%	-41.4%	0.01	1.12	-110.3%	-12.4%	0.024	0.010	0.01%
Kuwait Real Estate Holding	0.036	0.000	0.00%	0.68	13.12	0.00	7	-2.2%	-31.4%	0.00	0.00	5.1%	1.7%	0.059	0.032	0.02%
Taameer Real Estate Investment	0.019	-0.001	-5.00%	0.32	NM	0.00	4	-7.3%	-51.6%	0.01	0.38	-6.5%	-4.9%	0.054	0.018	0.01%
Sanam Real Estate	0.065	0.001	0.78%	0.84	28.57	0.00	8	8.4%	-18.9%	0.00	0.00	2.9%	2.8%	0.100	0.053	0.02%
Mena Real Estate	0.031	-0.002	-5.50%	0.29	NM	0.00	4	1.2%	-34.6%	0.00	0.03	-6.8%	-5.4%	0.105	0.030	0.01%
Al Masaken International Real Estate Developmen	0.031	0.000	0.00%	0.50	NM	0.00	3	9.2%	-29.8%	0.00	0.00	-1.1%	-0.4%	0.069	0.028	0.01%
Real Estate Trade Centers	0.049	0.000	-0.61%	0.28	20.67	0.00	7	-13.7%	-29.4%	0.00	0.00	1.3%	1.1%	0.123	0.043	0.02%
Land United Real Estate	0.068	0.000	0.00%	0.60	NM	0.00	10	0.0%	-27.6%	0.00	0.00	-4.8%	-1.5%	0.144	0.052	0.02%
Total Real Estate - 34 Companies							2,438			1.91	17.80					5.50%

DAILY MARKET COVERAGE REPORT

NIC MENA SECURITIES - RESEARCH AND STUDIES DEP



	Close (KD)	Day Δ	Day % Δ	PBV(X)	PE(X)	DY%	Mn KD	MTD(%)	YTD (%)	Value (Mn KD)	(Mn Shrs)	(%)	(%)	High	Low	%
Automated Systems	0.080	0.002	2.56%	0.69	NM	0.00	8	-1.2%	-17.0%	0.00	0.00	-3.4%	-3.0%	0.116	0.074	0.02%
Total Technology - 1 Companies				0.69	NM	0.0%	8			0.00	0.00	-3.40%	-2.96%			0.02%

Telecom	Price			Valuation Multiples			MKT Cap	Price Performance		Trading Indicators		ROE	ROA	52 Week (KD)		MKT Cap
Company	Close (KD)	Day Δ	Day % Δ	PBV(X)	PE(X)	DY%	Mn KD	MTD(%)	YTD (%)	Value (Mn KD)	(Mn Shrs)	(%)	(%)	High	Low	%
Mobile Telecommunications	0.572	-0.008	-1.38%	2.11	13.71	5.69	2,475	-1.9%	-2.5%	1.68	2.91	15.6%	4.3%	0.698	0.564	5.58%
Kuwait Telecommunications	0.551	-0.006	-1.08%	2.50	12.81	5.39	550	-0.5%	30.3%	0.14	0.26	20.1%	10.9%	1.189	0.418	1.24%
National Mobile Telecommunications	0.870	0.040	4.82%	0.79	12.57	4.22	436	-5.4%	33.0%	0.02	0.03	6.2%	3.6%	1.280	0.615	0.98%
AAN Digital Services	0.016	0.000	0.00%	0.60	NM	0.00	14	0.0%	-2.4%	0.00	0.00	NM	NM	0.020	0.016	0.03%
Hayat Communications	0.059	-0.006	-8.59%	0.51	NM	0.00	5	-5.6%	-39.6%	0.00	0.05	-0.7%	-0.3%	0.124	0.052	0.01%
Telecom - 5 Companies							3,480			1.85	3.25					7.85%

Utilities	Price			Valuation Multiples			MKT Cap	Price Performance		Trading Indicators		ROE	ROA	52 Week (KD)		MKT Cap
Company	Close (KD)	Day Δ	Day % Δ	PBV(X)	PE(X)	DY%	Mn KD	MTD(%)	YTD (%)	Value (Mn KD)	(Mn Shrs)	(%)	(%)	High	Low	%
Shamal Az-Zour Al-Oula Power & Water	0.190	0.000	0.00%	2.14	14.55	9.47	209	-2.6%	-16.7%	0.05	0.25	19.1%	2.9%	0.247	0.189	0.47%
Total Utilities - 1 Companies							209			0.05	0.25					0.47%

Total Market 157 Companies				1.98	30.56	4.11	44,353			26.33	101.53					100%
-----------------------------------	--	--	--	-------------	--------------	-------------	---------------	--	--	--------------	---------------	--	--	--	--	-------------

End of Report

The information contained in this document is proprietary to NIC and is for use only by the persons to whom it is issued. This document is confidential and may not be distributed either in part or in whole without the express agreement of NIC. It is intended solely for the use of the individual or entity to whom it is addressed and others authorized to receive it.

Note : ROE and ROA is calculated based on LFY net profit & shareholders' equity and LFY Operating Profits & Total Assets

Sources : National Investments Company Research and Studies Departments, Boursa, Refinitiv.



شركة الاستثمار الوطنية
NATIONAL INVESTMENTS COMPANY

Sharq, Al Mutanabi Street, Khaleejia Tower | P.O. Box 25667, Safat 13117, Kuwait

T.: +965 2226 6666 | Fax: +965 2226 6793 | www.nic.com.kw